

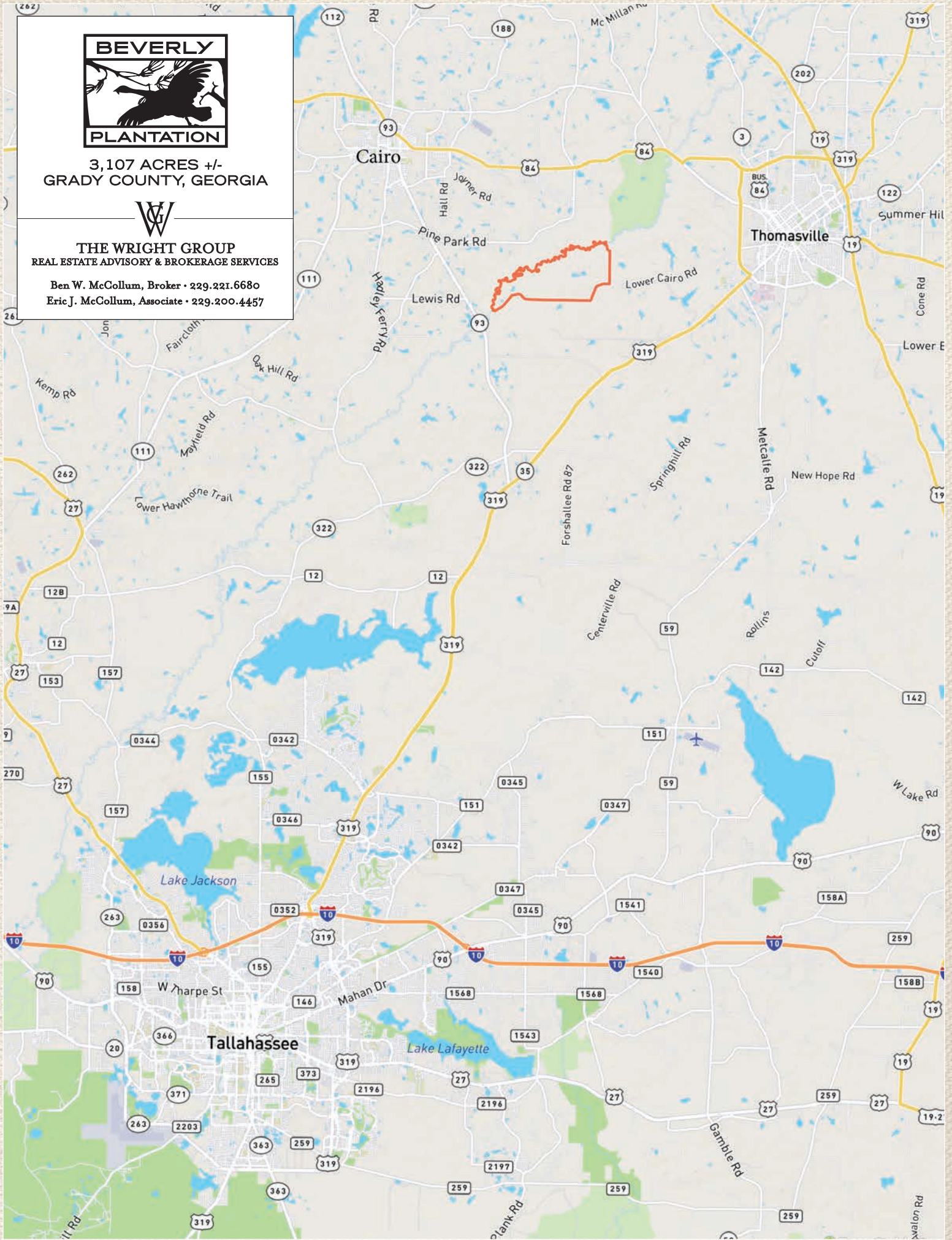


3,107 ACRES +/-
GRADY COUNTY, GEORGIA



THE WRIGHT GROUP
REAL ESTATE ADVISORY & BROKERAGE SERVICES

Ben W. McCollum, Broker • 229.221.6680
Eric J. McCollum, Associate • 229.200.4457



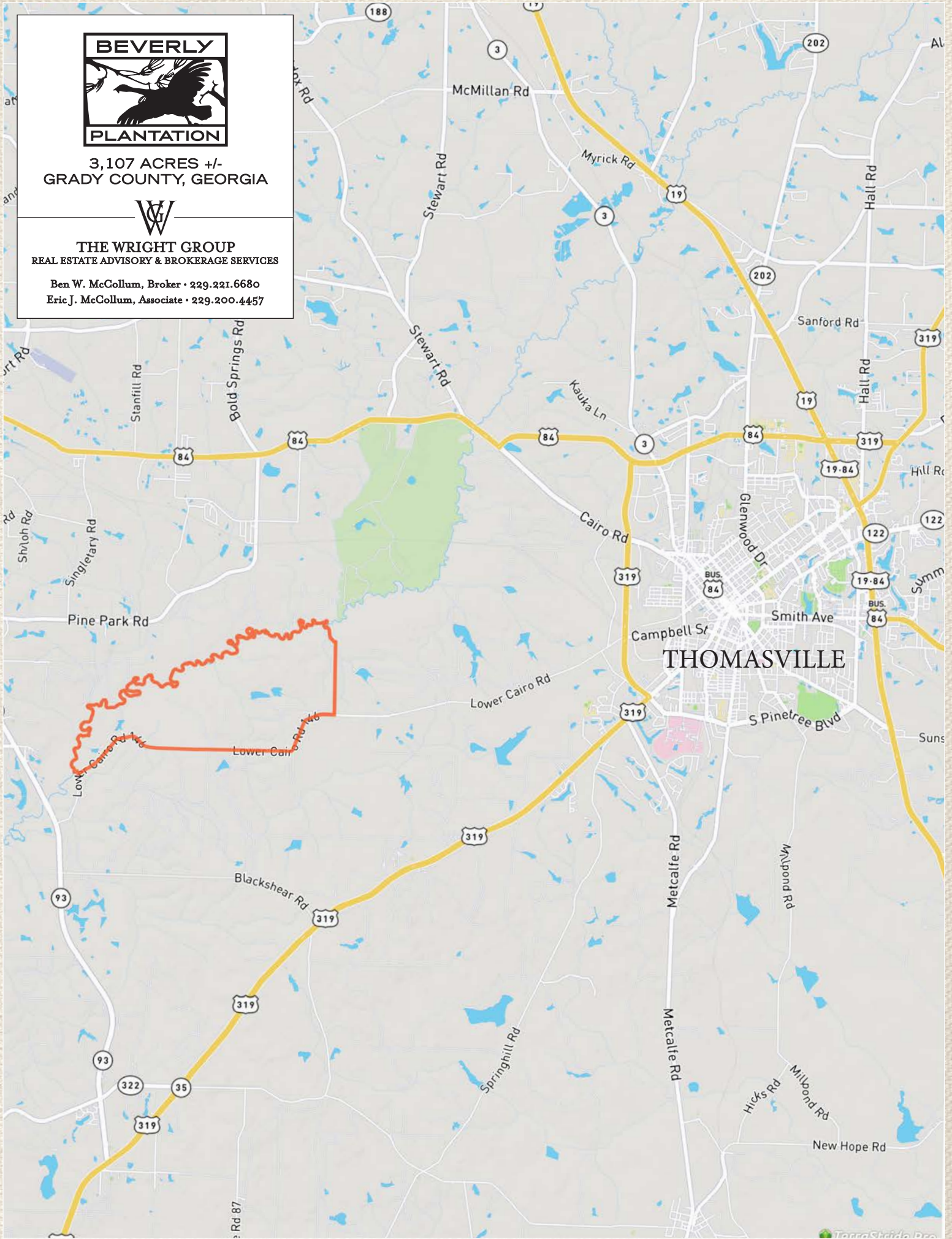


3,107 ACRES +/-
GRADY COUNTY, GEORGIA



THE WRIGHT GROUP
REAL ESTATE ADVISORY & BROKERAGE SERVICES

Ben W. McCollum, Broker • 229.221.6680
Eric J. McCollum, Associate • 229.200.4457



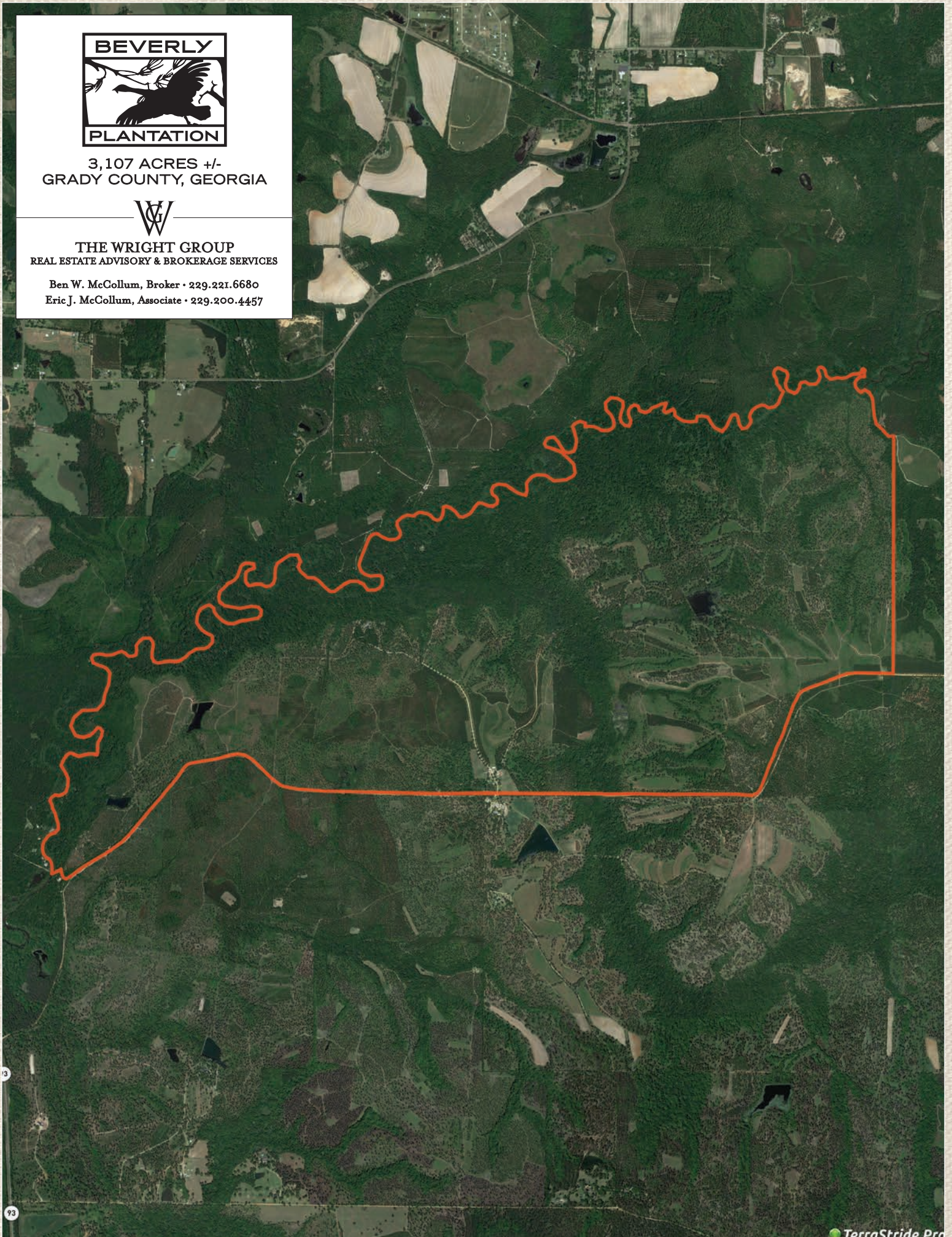


3,107 ACRES +/-
GRADY COUNTY, GEORGIA



THE WRIGHT GROUP
REAL ESTATE ADVISORY & BROKERAGE SERVICES

Ben W. McCollum, Broker • 229.221.6680
Eric J. McCollum, Associate • 229.200.4457



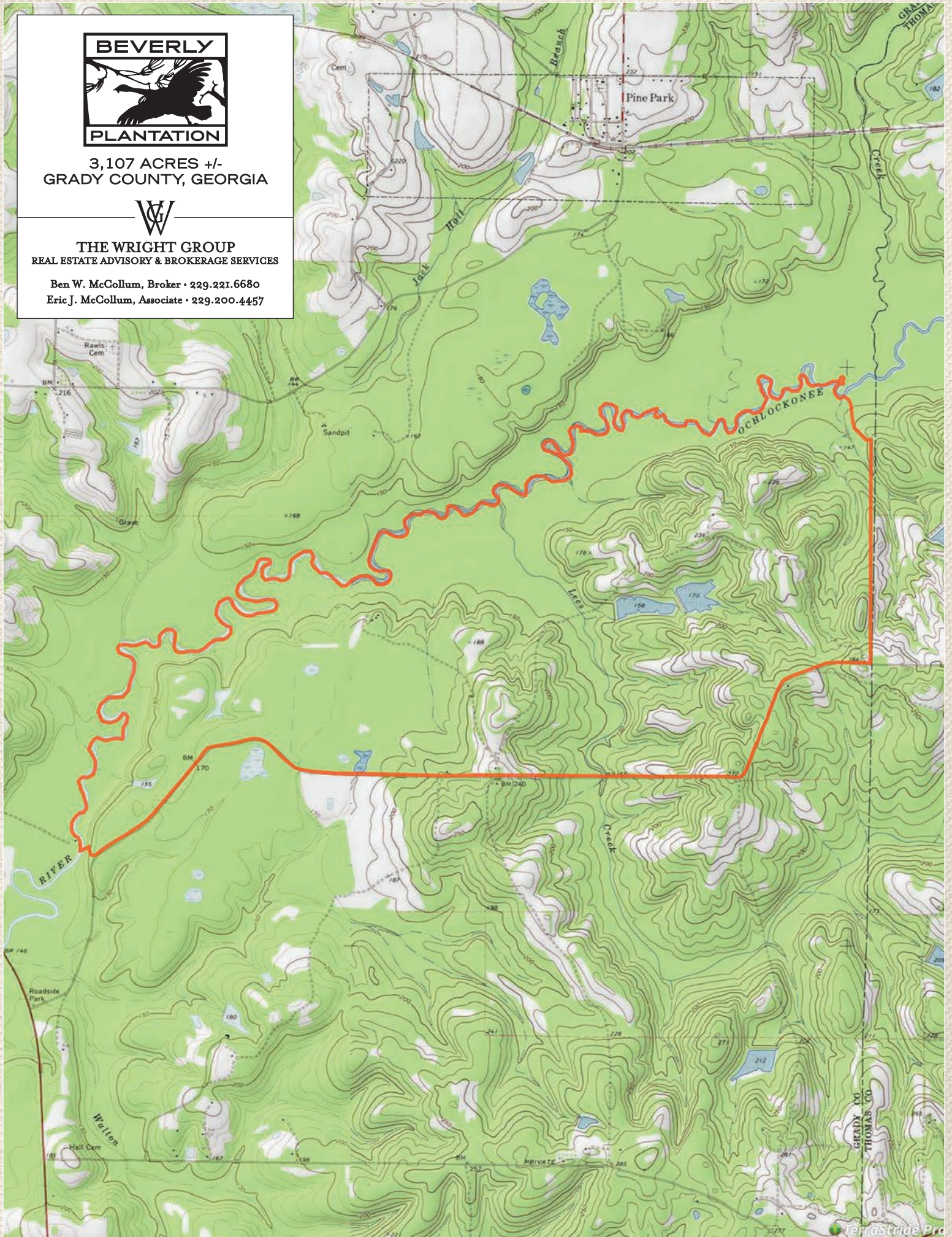


3,107 ACRES +/-
GRADY COUNTY, GEORGIA



THE WRIGHT GROUP
REAL ESTATE ADVISORY & BROKERAGE SERVICES

Ben W. McCollum, Broker • 229.221.6680
Eric J. McCollum, Associate • 229.200.4457

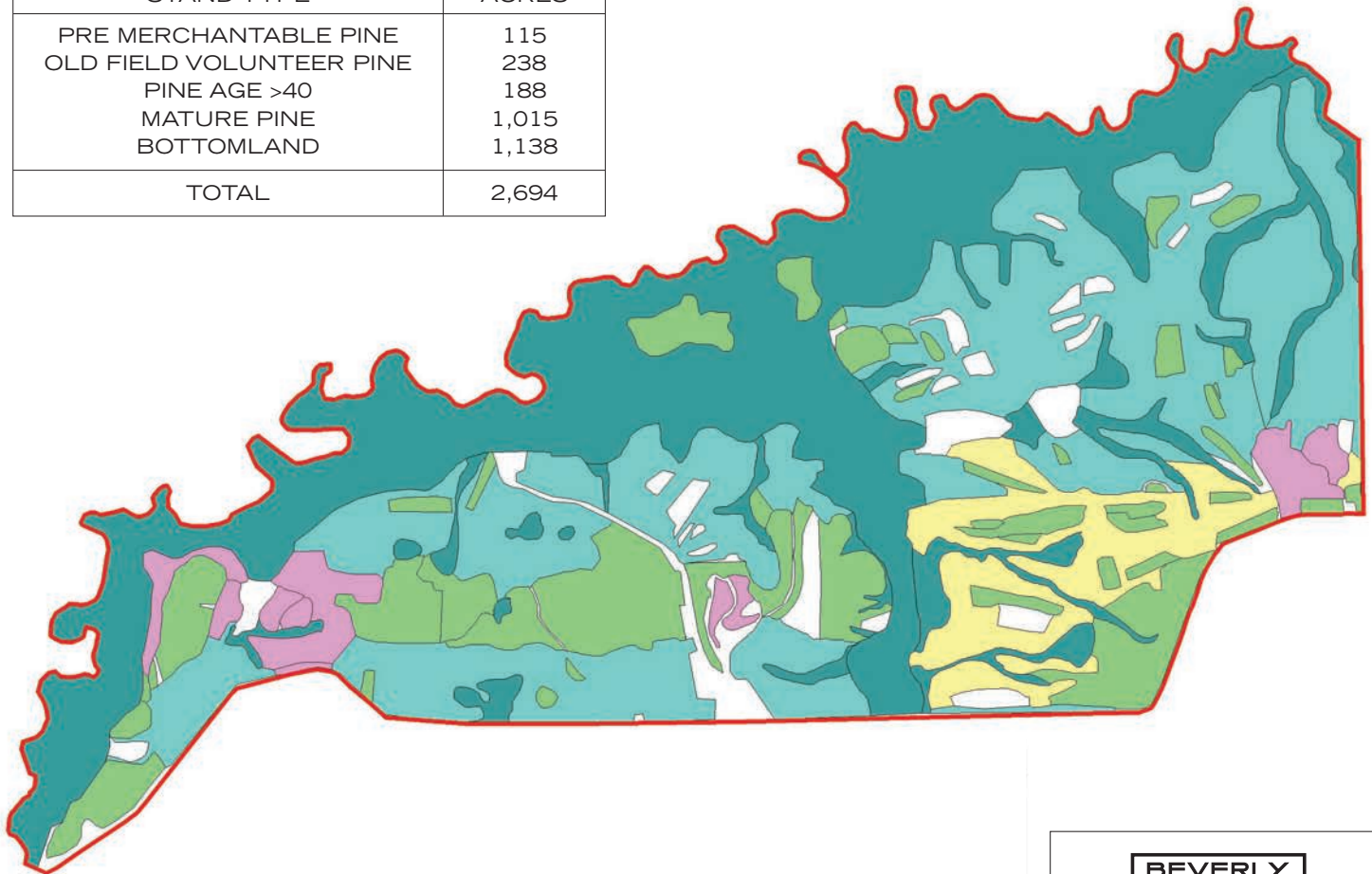




TIMBER TYPES

- BOUNDARY
- PRE MERCHANTABLE PINE
- OLD FIELD VOLUNTEER PINE
- PINE AGE <40
- MATURE PINE
- MIXED SPECIES BOTTOMLAND

TIMBER ACREAGE	
STAND TYPE	ACRES
PRE MERCHANTABLE PINE	115
OLD FIELD VOLUNTEER PINE	238
PINE AGE >40	188
MATURE PINE	1,015
BOTTOMLAND	1,138
TOTAL	2,694



3,107 ACRES +/-
GRADY COUNTY, GEORGIA



THE WRIGHT GROUP
REAL ESTATE ADVISORY & BROKERAGE SERVICES




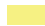




Ben W. McCollum, Broker • 229.221.6680
Eric J. McCollum, Associate • 229.200.4457

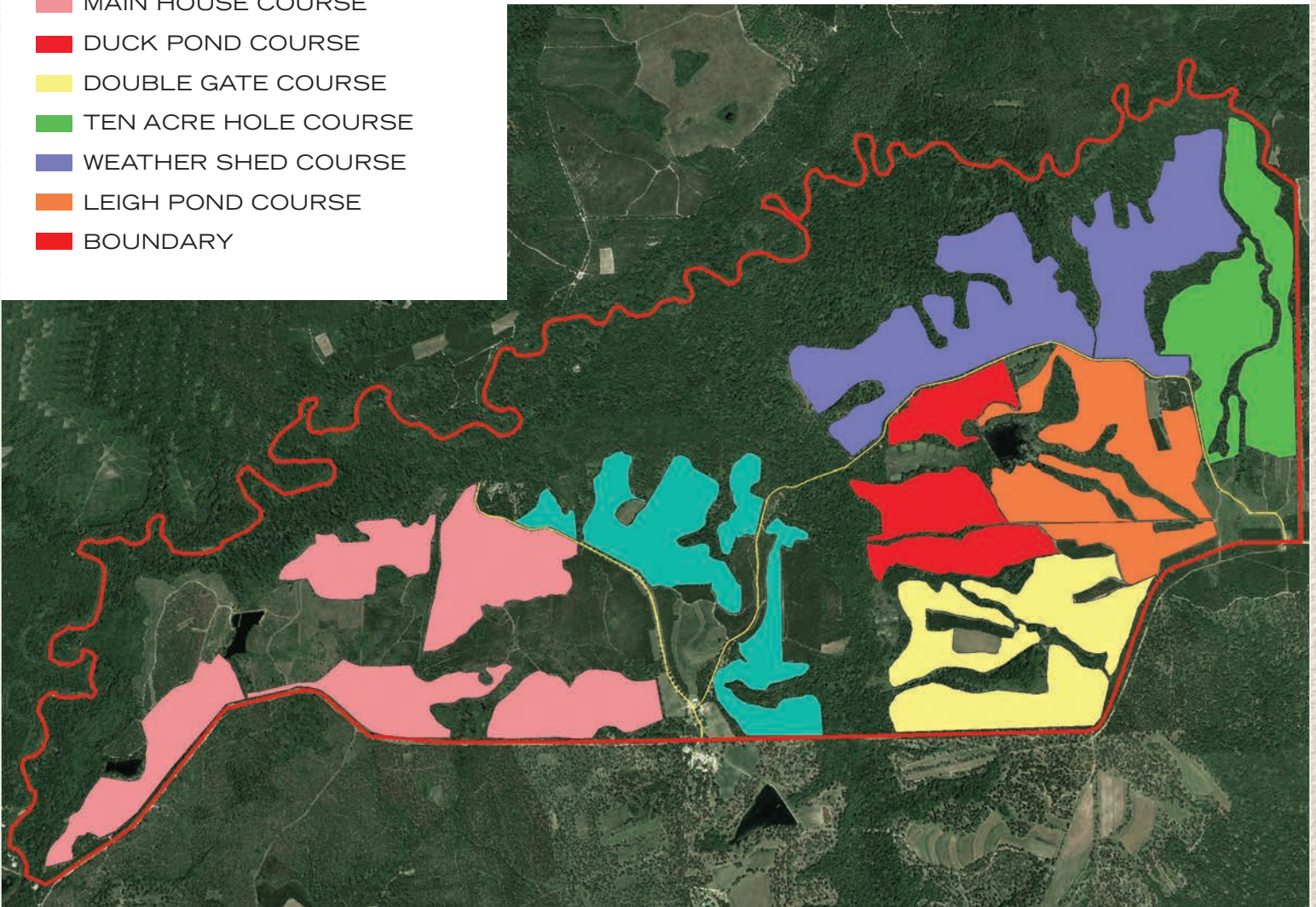


QUAIL COURSES
+/- 1290



HUNT COURSES BY NAME

-  CENTER SECTION COURSE
-  MAIN HOUSE COURSE
-  DUCK POND COURSE
-  DOUBLE GATE COURSE
-  TEN ACRE HOLE COURSE
-  WEATHER SHED COURSE
-  LEIGH POND COURSE
-  BOUNDARY



3,107 ACRES +/-
GRADY COUNTY, GEORGIA



THE WRIGHT GROUP
REAL ESTATE ADVISORY & BROKERAGE SERVICES

Ben W. McCollum, Broker • 229.221.6680
Eric J. McCollum, Associate • 229.200.4457



3,107 ACRES +/-
GRADY COUNTY, GEORGIA



THE WRIGHT GROUP
REAL ESTATE ADVISORY & BROKERAGE SERVICES

Ben W. McCollum, Broker - 229.221.6680
Eric J. McCollum, Associate - 229.200.4457

