

# Hutchins Farm

440.57 Acres



**The Wright Group**

Hunter Drew

(229) 224-6910

[hunter@wrightbroker.com](mailto:hunter@wrightbroker.com)

<http://www.wrightbroker.com>



# Hutchins Farm

440.57 Acres

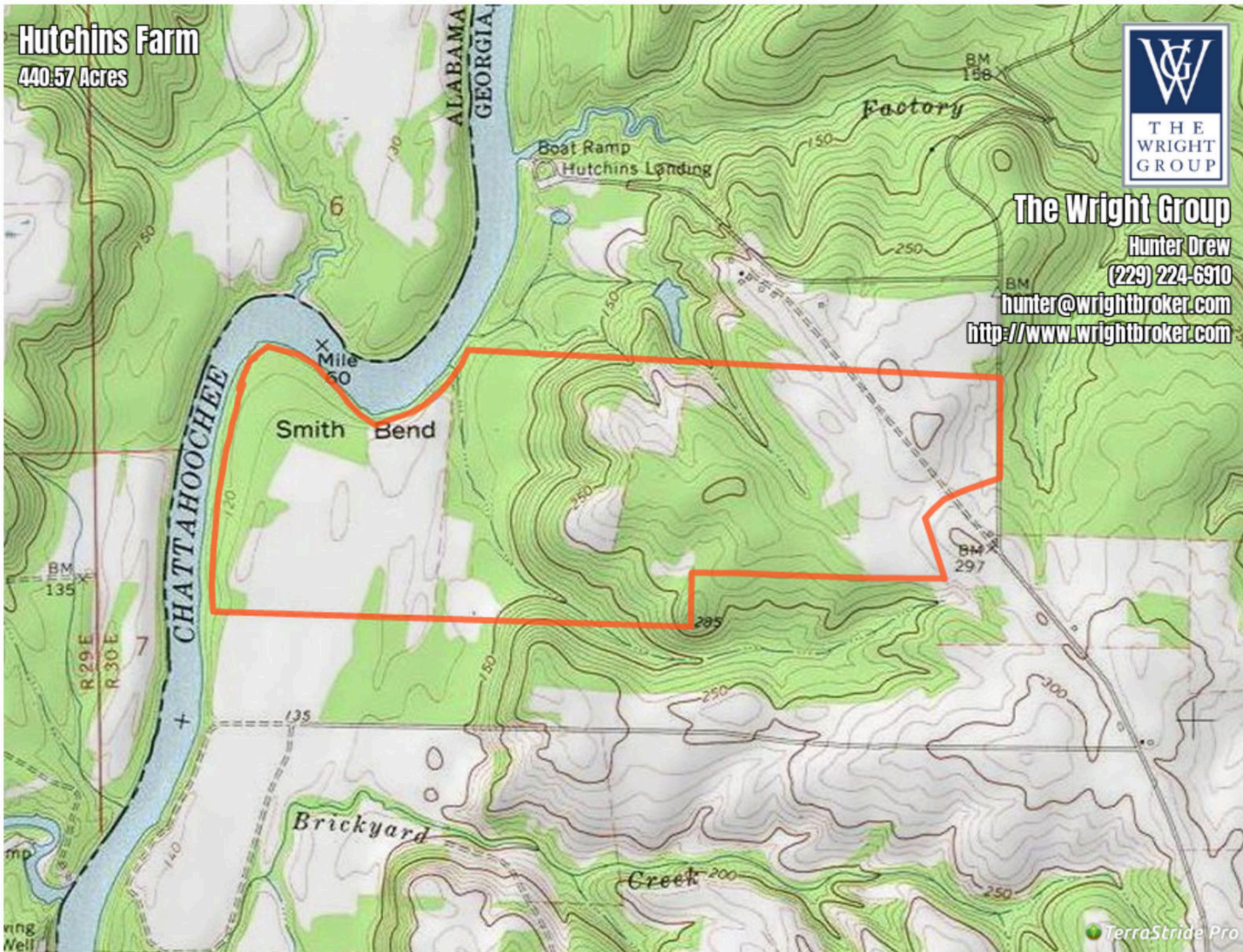


**The Wright Group**

Hunter Drew  
(229) 224-6910

hunter@wrightbroker.com

<http://www.wrightbroker.com>



# Hutchins Farm

440.57 Acres

e Dr



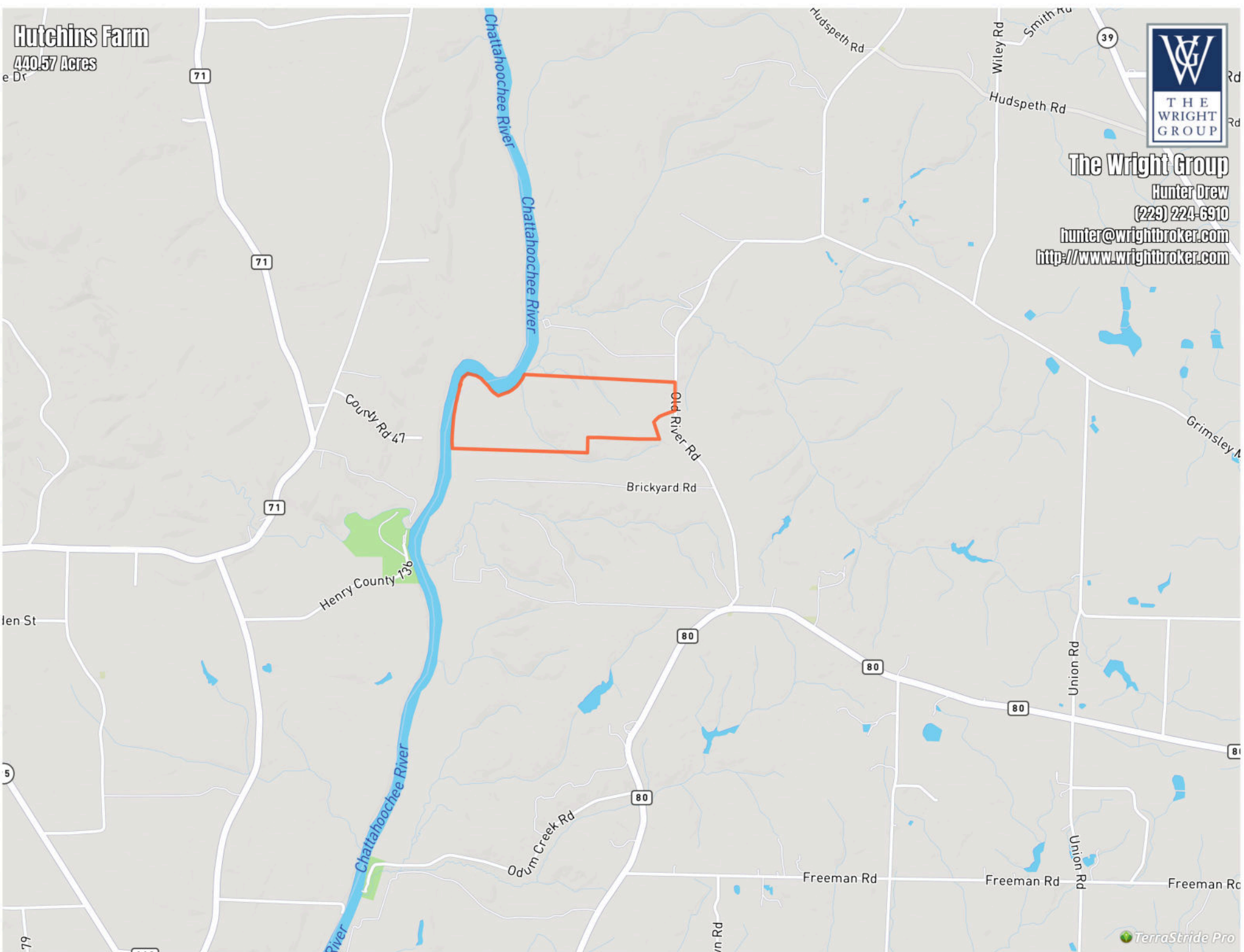
**The Wright Group**

Hunter Drew

(229) 224-6910

[hunter@wrightbroker.com](mailto:hunter@wrightbroker.com)

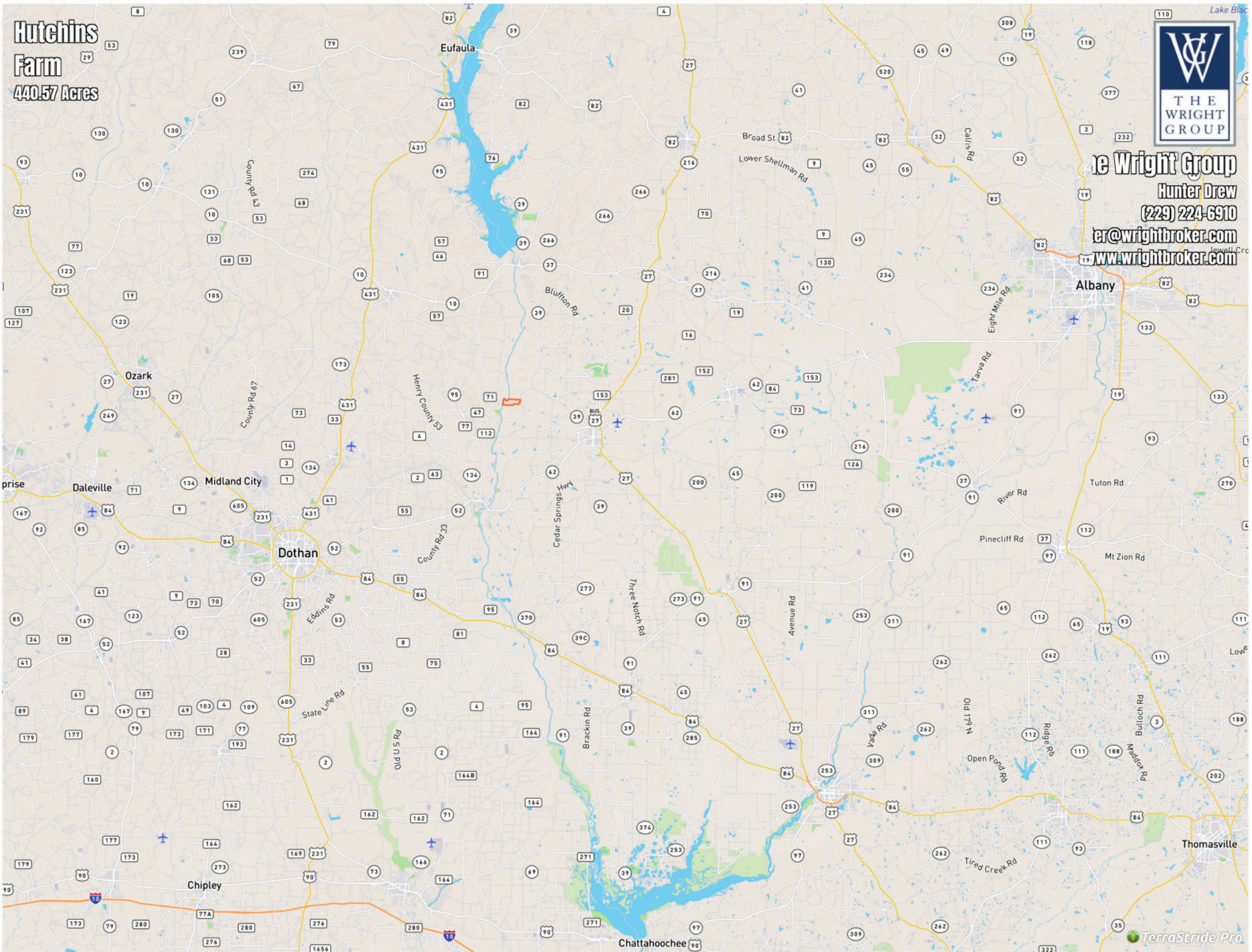
<http://www.wrightbroker.com>



**Hutchins  
Farm**  
440.57 Acres



**The Wright Group**  
Hunter Drew  
(229) 224-6910  
er@wrightbroker.com  
www.wrightbroker.com



LINE	BEARING	DISTANCE
L 1	N 87° 33' 23" W	18.50'
L 2	S 02° 01' 00" W	102.14'
L 3	S 39° 59' 00" E	424.42'
L 4	N 86° 56' 00" W	68.42'
L 5	S 02° 29' 45" W	571.36'
L 6	N 00° 01' 00" W	508.80'
L 7	N 17° 45' 00" E	474.60'
L 8	N 35° 09' 00" E	319.70'
L 9	S 88° 24' 00" E	462.10'

NOTE:

PLAT COMPILED FROM PREVIOUS SURVEYS DATED MAY 06, 1980  
 PREPARED BY GRADY LODGE HOLMAN AND APRIL 20, 2001  
 PREPARED BY GRADY LODGE HOLMAN

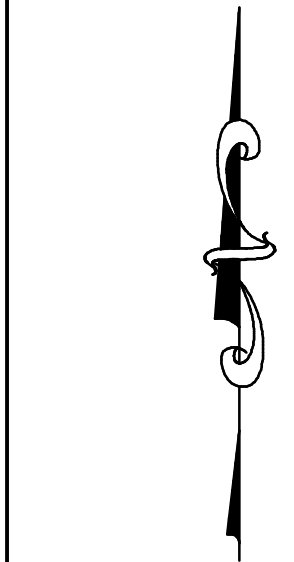
**SURVEYORS CERTIFICATION:**

THE PROPERTY HEREON LIES COMPLETELY WITHIN A JURISDICTION WHICH DOES NOT REVIEW OR APPROVE ANY PLATS OR THIS TYPE OF PLAT PRIOR TO RECORDING. RECORDATION OF THIS PLAT DOES NOT IMPLY APPROVAL OF ANY LOCAL JURISDICTION, AVAILABILITY OF PERMITS, COMPLIANCE WITH LOCAL REGULATIONS OR REQUIREMENTS OR SUITABILITY FOR ANY USE OR PURPOSE OF THE LAND. FURTHERMORE, THE UNDERSIGNED LAND SURVEYOR CERTIFIES THAT THIS PLAT COMPLIES WITH THE MINIMUM TECHNICAL STANDARDS FOR PROPERTY SURVEYS IN GEORGIA AS SET FORTH IN THE RULES AND REGULATIONS OF THE GEORGIA BOARD OF REGISTRATION FOR PROFESSIONAL ENGINEERS AND LAND SURVEYORS, AND AS SET FORTH IN O.C.G.A. SECTION 15-6-67.

GRADY LODGE HOLMAN GA PLS 2033 09-08-2003 DATE

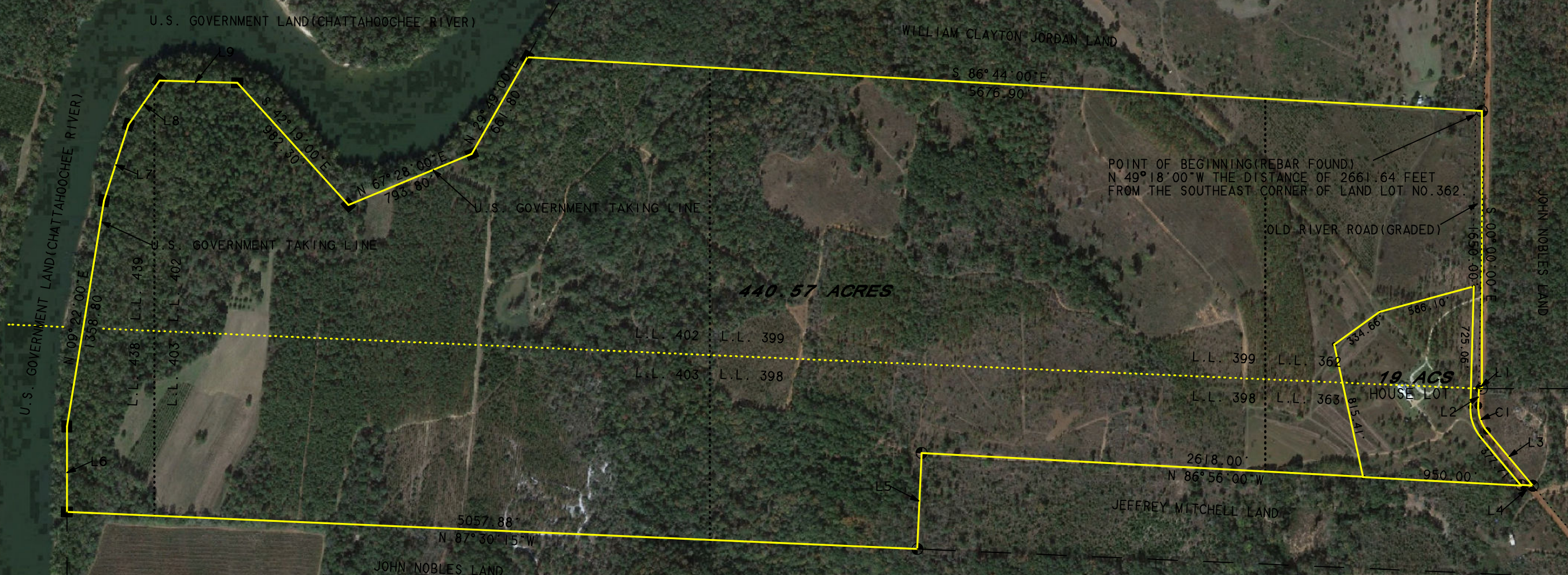
SPACE RESERVED FOR THE CLERK OF SUPERIOR COURT

CURVE	DELTA ANGLE	RADIUS	ARC	TANGENT	CHORD	CHORD BEARING
C 1	42° 00' 00"	221.61'	162.45'	85.07'	158.84'	S 18° 59' 01" E



0 660 1320  
 SCALE 1 INCH - 660 FEET

- ⊕ REBAR FOUND
- TRAVERSE POINT
- PIPE FOUND
- CONCRETE MONUMENT FOUND



**SURVEY FOR:**

**GLYNDA NIX**

**LAND LOTS 362, 363, 398, 399, 402, 403, 438 AND 439 - 28TH LAND DISTRICT**

**EARLY COUNTY, GEORGIA**

DRAWING 102023GN DRAWN BY G.L.H. FIELD WORK BY J.S.T. SCALE: 1" = 660' DATE 09-08-2003

**HOLMAN LAND SURVEYING INCORPORATED**

**PROFESSIONAL LAND SURVEYORS**

P.O. BOX 790 - 15156 RIVER STREET  
 BLAKELY, GEORGIA 39823  
 TEL: 229-723-4040 FAX: 229-723-8477  
 E-MAIL: holmanlandsurveying@gmail.com

GA RLS NO. 2033  
 AL RLS NO. 13658

