

# HILLFIELD FARM

---

712 +/- ACRES  
LOWNDES COUNTY, GEORGIA



Located only minutes from I-75 and Valdosta, Georgia, Hillfield offers an incredible recreational and future development opportunity. This extremely diverse tract consists of numerous age classes of planted pines, mature hardwood bottoms, well established food plots throughout, multiple newly developed ponds, an established productive dove field, and almost 1.5 miles of frontage on the Withlacoochee River. Priced at \$3650/acre.

- Multiple Age Classes of Planted Pines
- Four Ponds: 20 Acres, 6 Acres, 2.5 Acres and 1 Acre
- 10 Acre Extremely Productive Dove Field with Artificial Powerline
- Well Established Wildlife Food Plots
- Beautiful Hardwood Ridges and Bottoms
- Excellent Internal Road System
- Unbelievable Deer, Turkey, and Dove Hunting
- Long Road Frontage with Multiple Entrances
- Future Development Potential: Large Portion Zoned R-1
- 1.45 Miles of Frontage on Withlacoochee River



## THE WRIGHT GROUP

Real Estate Advisory & Brokerage Services  
109 South Broad Street | Thomasville, Georgia 31792  
229.226.2564 Office | [WRIGHTBROKER.COM](http://WRIGHTBROKER.COM)

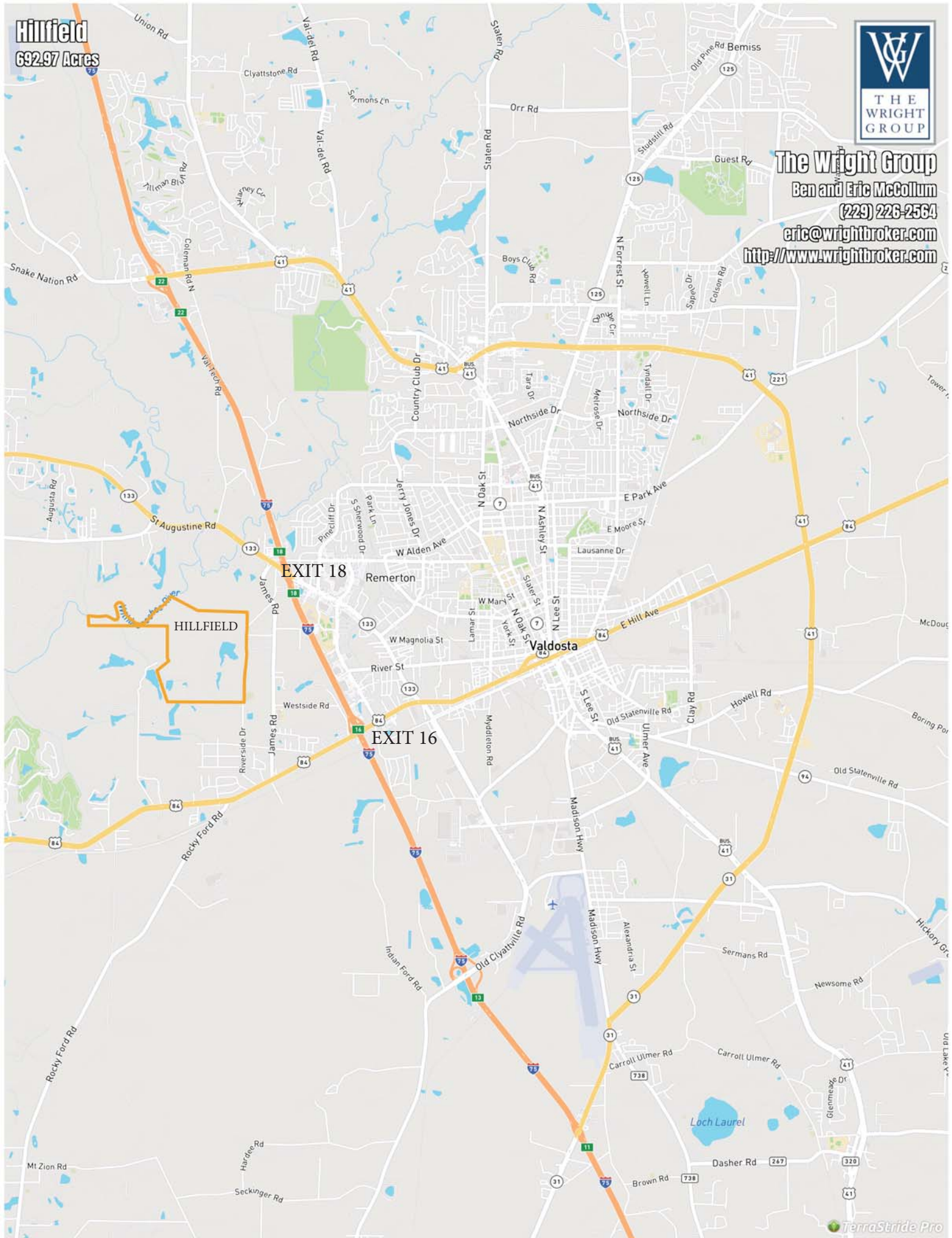
Ben W. McCollum, Broker | 229.221.6680  
[ben@wrightbroker.com](mailto:ben@wrightbroker.com)

Eric J. McCollum, Associate | 229.200.4457  
[eric@wrightbroker.com](mailto:eric@wrightbroker.com)

**Hillfield**  
692.97 Acres



**The Wright Group**  
Ben and Eric McCollum  
(229) 226-2564  
eric@wrightbroker.com  
<http://www.wrightbroker.com>



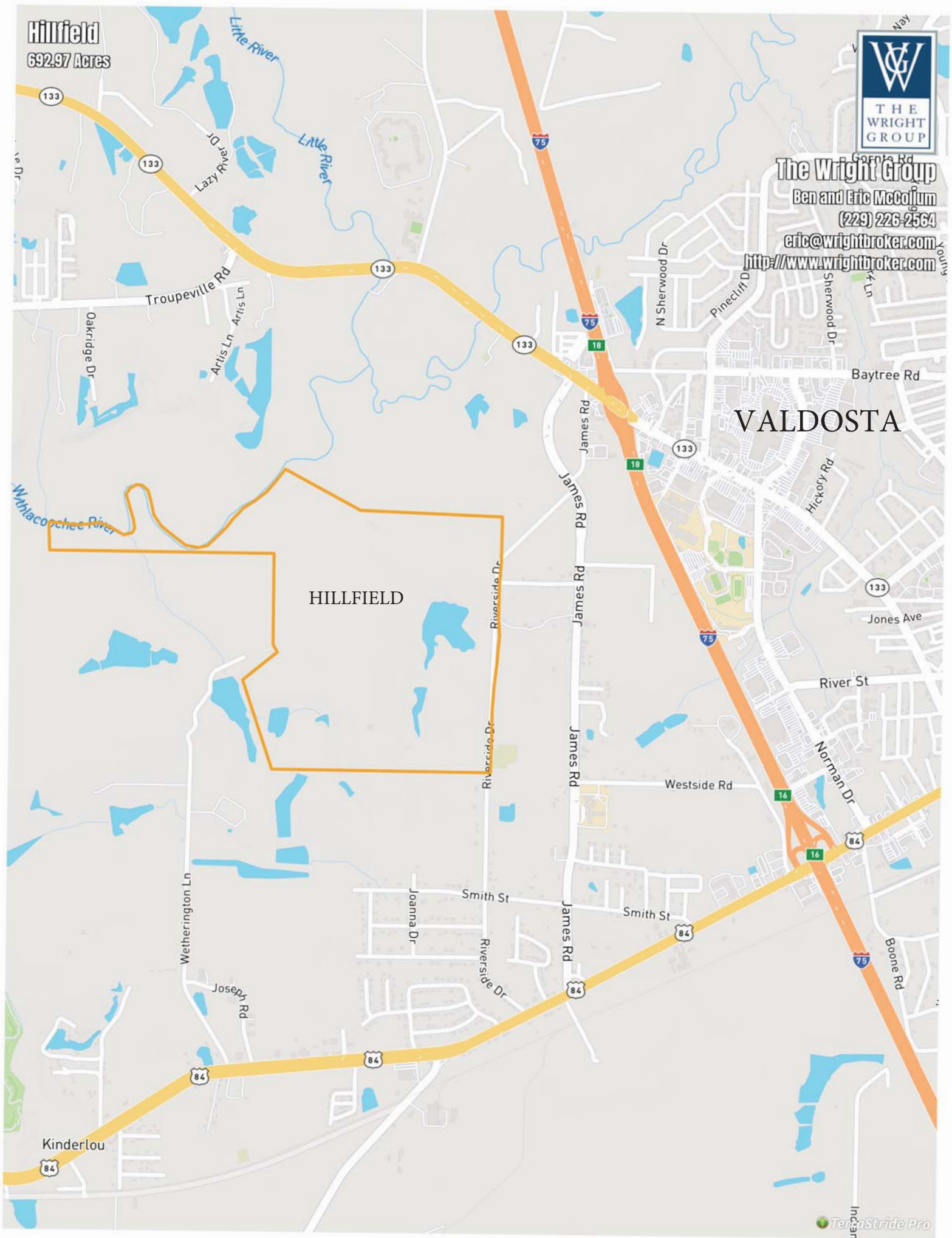
**Hillfield**  
632.97 Acres



**The Wright Group**  
Ben and Eric McColium  
(229) 226-2564  
eric@wrightbroker.com  
<http://www.wrightbroker.com>

# VALDOSTA

**HILLFIELD**



**Hillfield**  
692.97 Acres

Troupville Rd

133

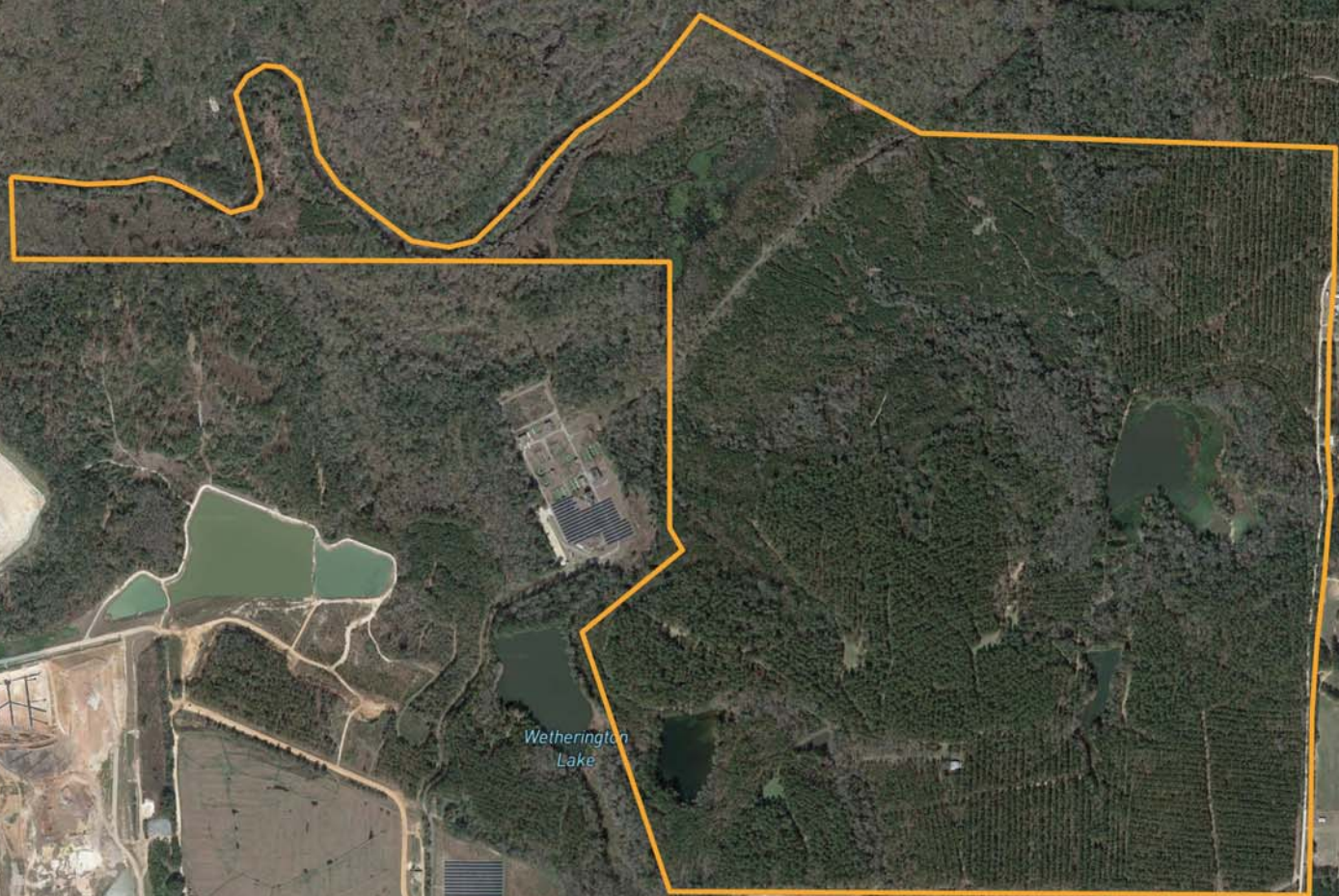
133



**The Wright Group**

Ben and Eric McCollum  
(229) 226-2564

eric@wrightbroker.com  
<http://www.wrightbroker.com>



Wetherington  
Lake

**Hillfield**  
692.97 Acres



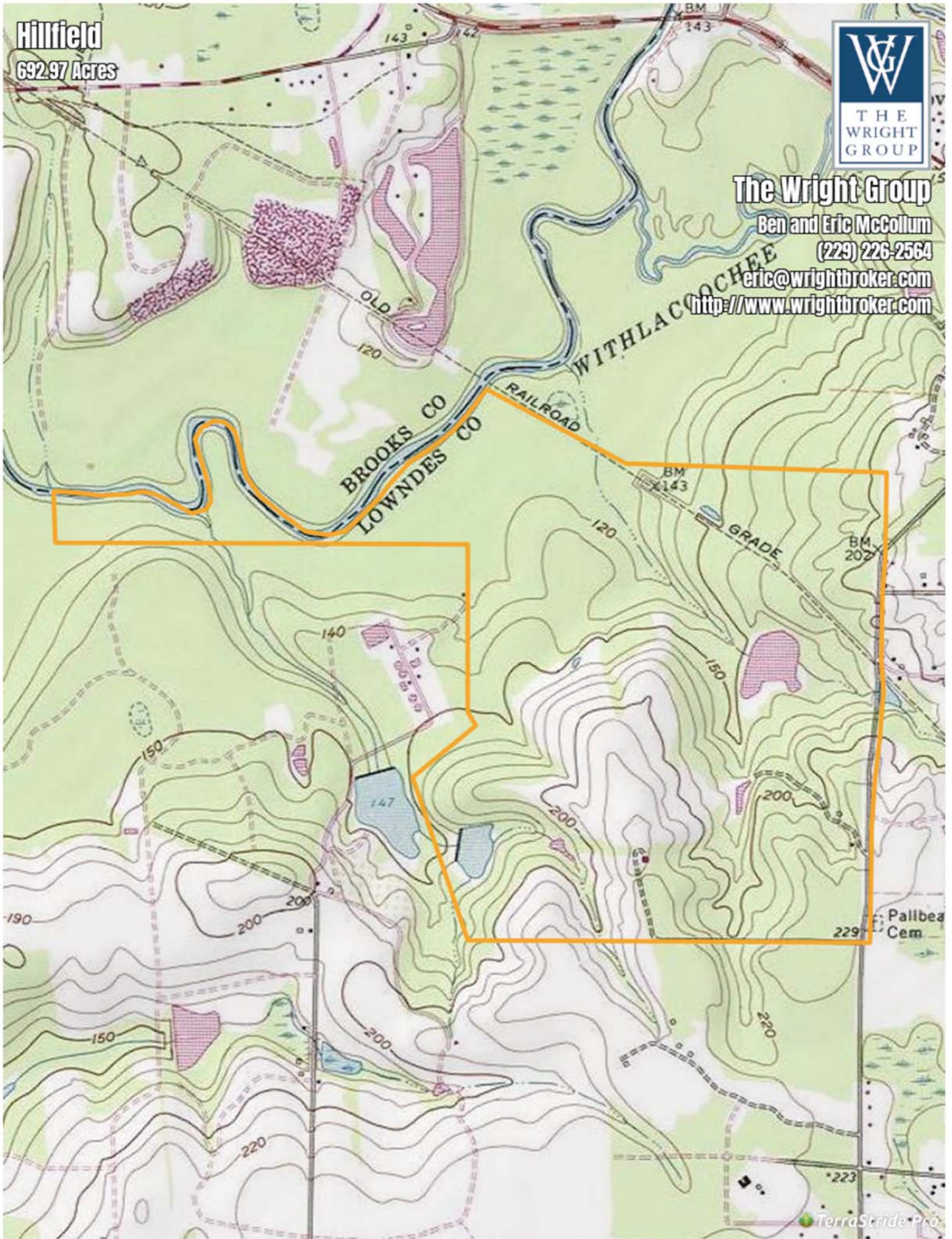
**The Wright Group**

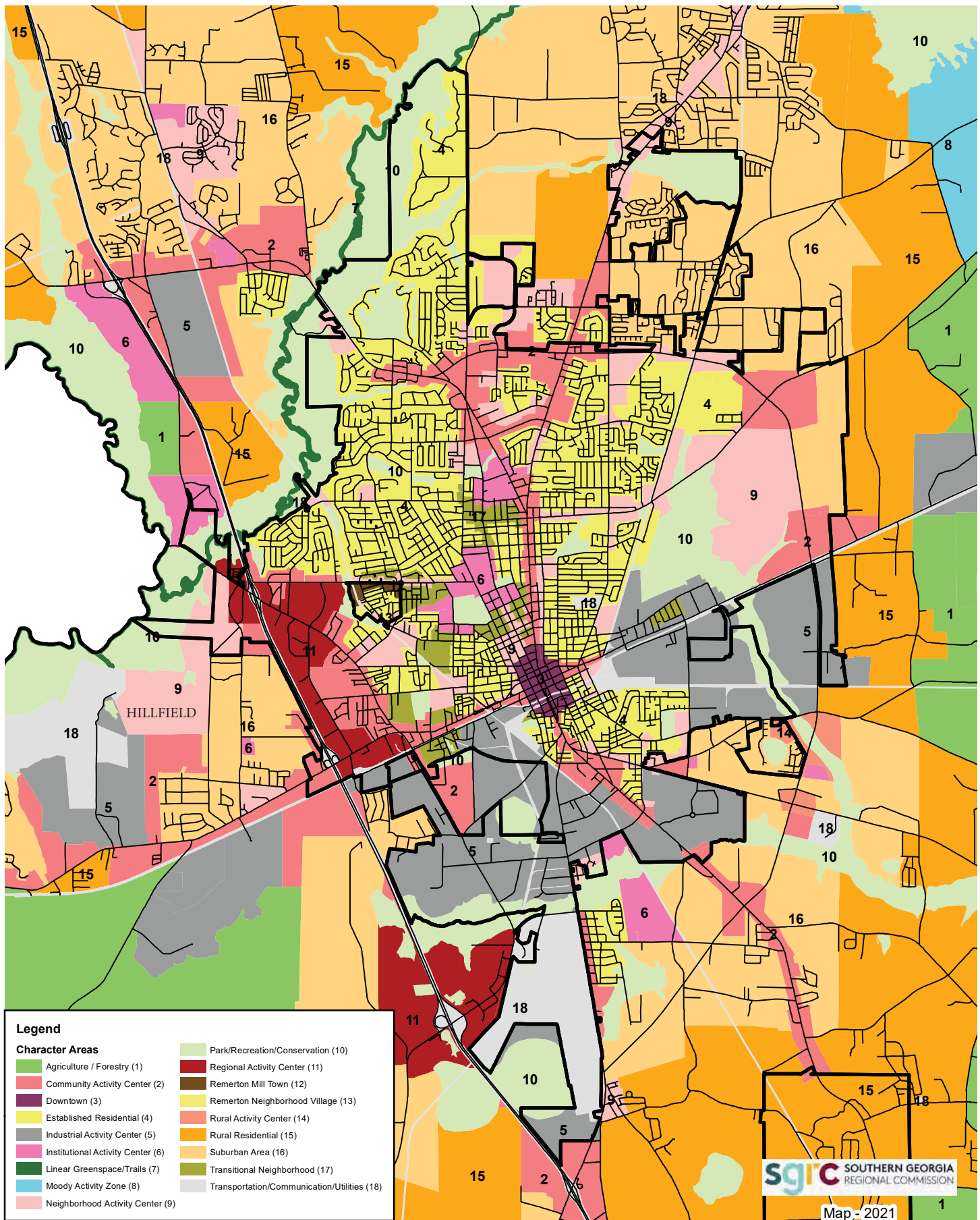
Ben and Eric McCollum

(229) 226-2564

eric@wrightbroker.com

<http://www.wrightbroker.com>





# VALDOSTA CHARACTER AREA MAP

